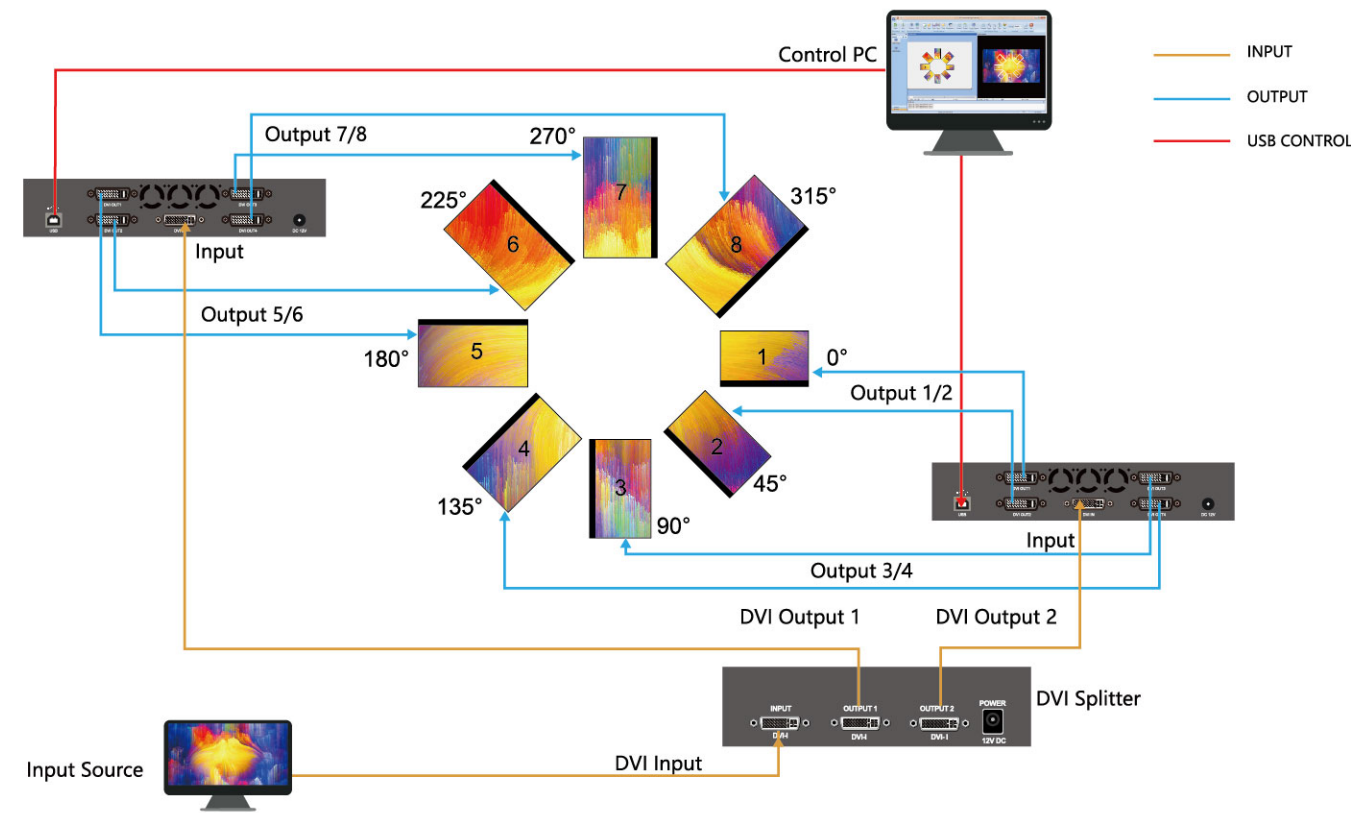


Diagram:



* NOTE: This diagram is based on model DB-VRC4D.

Optional Models



DB-VRC4D

45° increments rotation, Order #: DB-VRC4D



DB-VRC4H

45° increments rotation, Order #: DB-VRC4H



DB-VRC4H-360F

1° increments rotation, Order #: DB-VRC4H-360F

Datasheet:

	DB-VRC4D	DB-VRC4H	DB-VRC4H-360F
Input			
Input Connectors	1x Single-Link or Dual-Link DVI-I female	1x HDMI 1.4	1x HDMI 1.4
Input Resolution	Up to 4088x4088 18Hz	Up to 3840x2160 30Hz	Up to 3840x2160 30Hz
Input Clock Rate	330M Hz	300M Hz	300M Hz
Input Bandwidth	9.9 Gbps	10.2 Gbps	10.2 Gbps
Input/output Sync	x	✓	✓
Output			
Output Connectors	4x Single-Link DVI or analog RGB	4x HDMI 1.3 type A; 1x HDMI 1.4 Loopout	4x HDMI 1.3 type A; 1x HDMI 1.4 Loopout
Output Resolution	Up to 1920x1200 60Hz	Up to 1920x1200 60Hz	Up to 1920x1200 60Hz
Display sizes	Different display size for each output channel	Different display size for each output channel	Different display size for each output channel
Overlap	✓	✓	✓
Loop through	x	✓	✓
Power			
Power	Input: 110-240V AC; Output: 12V DC Rate: max. 40W	Input: 110-240V AC; Output: 12V DC Rate: max. 20W	Input: 110-240V AC; Output: 12V DC Rate: max. 20W
Features			
Rotation	45°, 90°, 135°, 180°, 225°, 270° or 315°	45°, 90°, 135°, 180°, 225°, 270° or 315°	0-360°, 1° increments rotation
Arbitrary Upscaling	✓	✓	✓
EDID Management	✓	✓	✓
Bezel Compensation	✓	✓	✓
Cropping	✓	✓	✓
Flipping	✓	✓	✓
Cascading	✓	✓	✓
Control			
Control	USB-B Connector; USB 2.0	USB-B Connector; USB 2.0	USB-B Connector; USB 2.0
Software	Windows based GUI software	Windows based GUI software	Windows based GUI software
Environmental			
Operating Humidity	90% non-condensing	90% non-condensing	90% non-condensing
Operating Temperature	32° to 104° F (0° to 40°C)	32° to 104° F (0° to 40°C)	32° to 104° F (0° to 40°C)
Mechanical			
Net Dimensions	1.75"H x 8.86"W x 8.66"D (44.5mm x 225mm x 220mm) without rack mount ears 1.75"H x 10.24"W x 8.66"D (44.5mm x 260mm x 220mm) with rack mount ears	1.75"H x 8.38"W x 8.11"D (44.5mm x 213mm x 206mm) without rack mount ears 1.75"H x 9.76"W x 8.11"D (44.5mm x 248mm x 206mm) with rack mount ears	1.75"H x 8.38"W x 8.11"D (44.5mm x 213mm x 206mm) without rack mount ears 1.75"H x 9.76"W x 8.11"D (44.5mm x 248mm x 206mm) with rack mount ears
Package Dimensions	3.74"H x 17.72"W x 12.20"D (95mm x 450mm x 310mm)	3.74"H x 17.72"W x 12.20"D (95mm x 450mm x 310mm)	3.74"H x 17.72"W x 12.20"D (95mm x 450mm x 310mm)
Net Component Weight	2.78 lbs (1.26 Kg)	1.76 lbs (0.8 Kg)	1.76 lbs (0.8 Kg)
Shipping Weight	6.33 lbs (2.87 Kg)	5.30 lbs (2.4 Kg)	5.30 lbs (2.4 Kg)



DigiBird Technology Co., Ltd.
Longuan Business Center, Suite 501
Huilongguan W. St. Changping
Beijing China 102208
sales@digibirdtech.com
www.digibirdtech.com

Your Distributor

Your Distributor

DB-VRC 4K Video Wall Controller



1°, 45° and/or 90° increments rotation



Bezel compensation



4K capturing



Flip, Crop, Zoom & Duplication



EDID management



Cascade multiple units



Supports diverse display sizes and resolution grouping



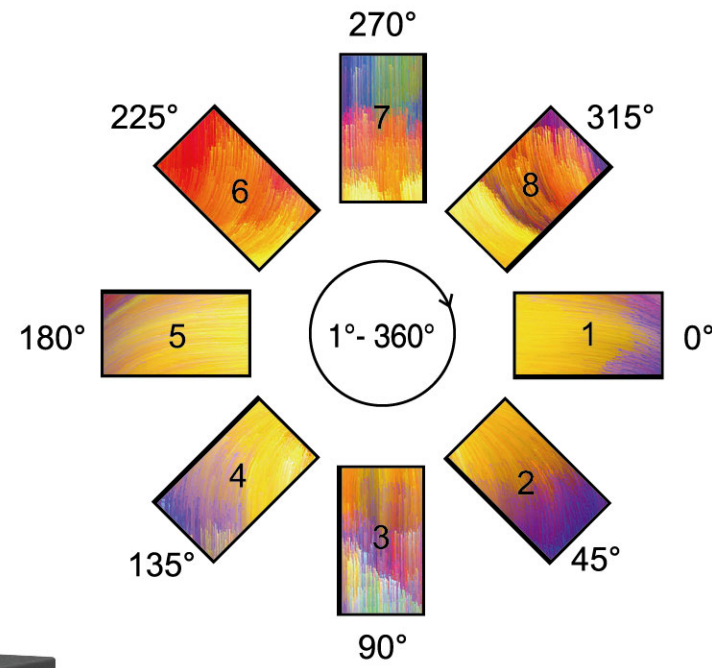
Easy to use

Introduction:

DigiBird® DB-VRC is a FPGA-based compact video wall controller that supports the rotation of displays in 1°, 45° and/or 90° increments.

The simplest and most cost-effective solution to build a video wall, the DB-VRC breaks the limitations of traditional rectangular alignments to create splendid works of art.

The DB-VRC is the ideal digital signage solution for retail stores, hotel lobbies, shopping malls, airports, art galleries, exhibitions, etc.



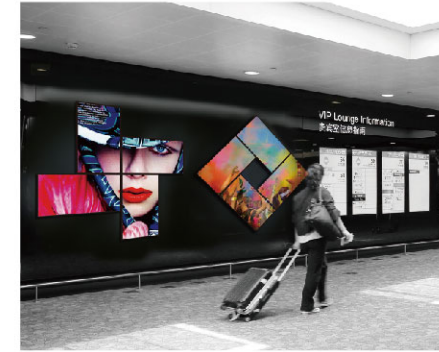
Features:

- Supports 1°, 45° and/or 90° rotation of displays
- One unit controls up to 4 displays of different size and resolution
- Cascade multiple units to build large scale video walls
- Auto bezel compensation
- Horizontal and vertical mirroring/flip
- Ultra high input resolution up to 3840x 2160 @30Hz or 4088x 4088 @18Hz
- Output resolution up to 1920x 1200 @60Hz
- 1x Single/ Dual-link DVI input port and 4x DVI-I output ports (45° increments, Order #: DB-VRC4D)
- 1x HDMI1.4 input port, 1x loopout and 4x HDMI1.3 output ports (45° increments, Order #: DB-VRC4H)
- 1x HDMI1.4 input port, 1x loopout and 4x HDMI1.3 output ports (1° increments, Order #: DB-VRC4H-360F)
- Sync I/O port to ensure synchronization (Order #: DB-VRC4H; DB-VRC4H-360F)
- Supports arbitrary cropping
- Flexible EDID management
- Windows XP, Windows 7®, Windows 8®, and Windows 10® compatible.

Applications:



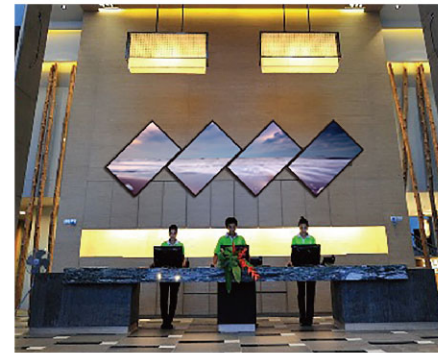
4S Shop



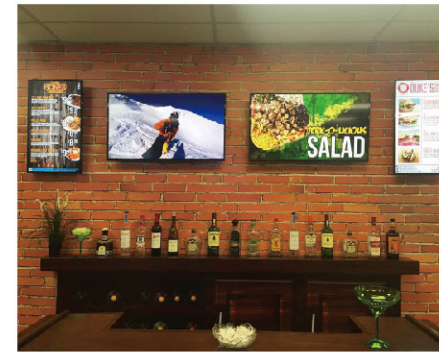
Airport



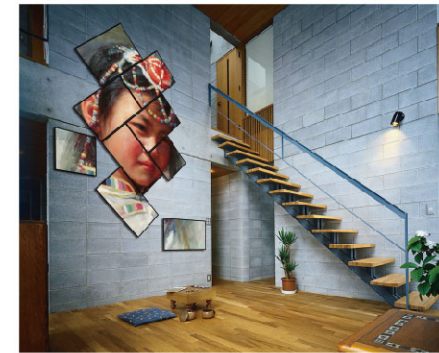
Club



Hotel



Coffee Bar



Art Center



Shopping Mall



Show



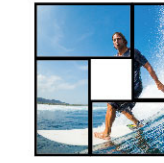
Museum

Layouts:

Rotation: 90° Increments



Windmill



Doughnut



Asymmetric



2x2 Layouts

Rotation: 45° Increments



Windmill



Doughnut

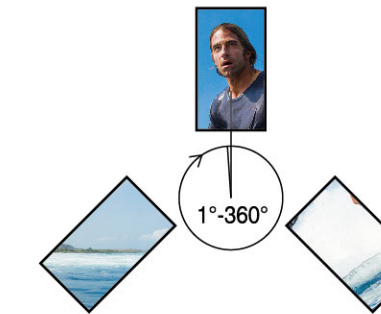


Asymmetric



45°

Rotation: 1° Increments



- Any degree rotation (1° increments)
- Any position of each monitor
- Any size of each monitor
- More flexible creativity

Crop and Duplicate



Crop Layouts



Matrix Mode



Landscape and Portrait